



WELCOME

TO



Made by  
Neha, Bhoomi  
Pinkal

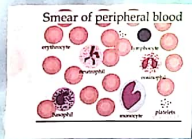
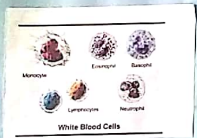
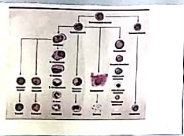


OUR

PRESENTATION

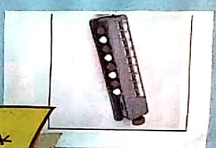
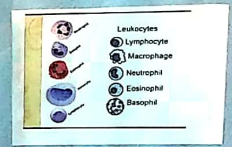
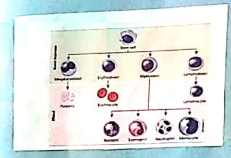


# DIFFERENTIAL COUNT



COUNTING

|   |   |
|---|---|
| W | W |
| W | W |
| W | W |
| W | W |



Microbiology - 1st & 2nd Year

|      |          |      |
|------|----------|------|
| Name | Roll No. | Date |
|      |          |      |
|      |          |      |
|      |          |      |

**Aim:** To perform differential leukocyte count.

**Principle:** The stained blood smear permit the recognition and identification of the different kinds of leucocytes and the appearance of erythrocytes and thrombocytes.

**Relevance:** It is useful to count the cells in the differential white cell count which may be related to specific area of disease. It also gives idea regarding the severity of disease and degree of response of the body.

**Significance:** An increased percentage of basophils may be due to:

- (1) An increased level of IgE in hypersensitivity
- (2) Allergic rhinitis
- (3) Allergic conjunctivitis
- (4) Allergic asthma
- (5) Parasitic infestation
- (6) Myeloid leukaemia

**Significance:**

- (1) Small lymphocyte - These are common form of leucocytes. They are small, round, deep purple staining nucleus, distinct rim of the cell.
- (2) Large lymphocyte - These are larger form of leucocytes. They have a little pale nucleus.